



# 2ND CAVALRY REGIMENT DRAGOONS



## WELCOME PACKET



# 2d Cavalry Regiment Welcome Packet



## Part One: Before Arrival    Part Three: USAG Bavaria    Part Four: Life in Germany    Part Four: Misc.

<a href="#">Welcome Letter.....</a>	<a href="#">1</a>
<a href="#">2d Cavalry Regiment Song.....</a>	<a href="#">2</a>
<a href="#">2CR Squadrons.....</a>	<a href="#">3</a>
<a href="#">2CR Squadron Breakdown.....</a>	<a href="#">4</a>
<a href="#">2CR Regiment/Squadron Contact List.....</a>	<a href="#">5</a>
<a href="#">Total Army Sponsorship Program.....</a>	<a href="#">6</a>
<a href="#">TASP FAQ.....</a>	<a href="#">7</a>
<a href="#">Command Sponsorship.....</a>	<a href="#">8</a>
<a href="#">Special Issuance Passports.....</a>	<a href="#">9</a>
<a href="#">COVID-19 Travel Guidelines.....</a>	<a href="#">10</a>

## Part Two: Arrival

<a href="#">The Patriot Express.....</a>	<a href="#">11</a>
<a href="#">Pets and Service Animals.....</a>	<a href="#">12</a>
<a href="#">Pet Travel Fees and Canine Classes.....</a>	<a href="#">13</a>

<a href="#">Housing.....</a>	<a href="#">14</a>
<a href="#">Temporary Lodging.....</a>	<a href="#">15</a>
<a href="#">Education – Schools.....</a>	<a href="#">16</a>
<a href="#">Education – CYS.....</a>	<a href="#">17</a>
<a href="#">Vehicles Overview.....</a>	<a href="#">18</a>
<a href="#">Vehicle Registration and Regulation...19</a>	
<a href="#">Driving Requirements.....</a>	<a href="#">20</a>
<a href="#">Driving Requirements, continued.....</a>	<a href="#">21</a>
<a href="#">ESSO, Motorcycles, Car Repairs.....</a>	<a href="#">22</a>
<a href="#">Rules of the Road.....</a>	<a href="#">23</a>
<a href="#">Communication – Cell Phones.....</a>	<a href="#">24</a>
<a href="#">Communication – Mail.....</a>	<a href="#">25</a>
<a href="#">APO, AE and German mail/parcels.....</a>	<a href="#">26</a>
<a href="#">Finances – OHA and MIHA.....</a>	<a href="#">27</a>
<a href="#">Finances – German banks and taxes...28</a>	
<a href="#">Finances – Buy a Car and Insurance....29</a>	

<a href="#">Recycling.....</a>	<a href="#">30</a>
<a href="#">SFRG.....</a>	<a href="#">31</a>
<a href="#">SFRG (Social Media Pages).....</a>	<a href="#">32</a>
<a href="#">Medical.....</a>	<a href="#">33</a>
<a href="#">Retail Shopping and Greetings.....</a>	<a href="#">34</a>
<a href="#">Traveling.....</a>	<a href="#">35</a>
<a href="#">Traveling, cont. ,.....</a>	<a href="#">36</a>
<a href="#">Spouse Employment and Education...37</a>	
<a href="#">B.O.S.S. ....</a>	<a href="#">38</a>
<a href="#">Installation Contacts.....</a>	<a href="#">39</a>

<a href="#">Countdown to Germany.....</a>	<a href="#">40</a>
<a href="#">Before You Leave.....</a>	<a href="#">41</a>
<a href="#">Before You Leave, cont. ....</a>	<a href="#">42</a>
<a href="#">Pro Tip Page.....</a>	<a href="#">43</a>

**Disclaimer** - This is not an official publication, and does not imply endorsement of the entities discussed herein by 2d Cavalry Regiment or the U.S. Army. This material serves only to inform incoming Soldiers of available on- and off-post community resources.





DEPARTMENT OF THE ARMY  
HEADQUARTERS, 2D CAVALRY REGIMENT  
UNIT 28920  
APO AE 09112



Page 1  
[Return to PCS](#)  
[Guide Main Page](#)



Dear Future Dragoon,

Welcome to the 2d Cavalry Regiment (2CR), the US Army's oldest continuously serving active duty regiment since 1836! Today, we are stationed at Rose Barracks in Bavaria, Germany. The beautiful German state of Bavaria is a premier location that offers a multitude of activities and traveling for Single Soldiers and Families alike. We are surrounded by history and culture, and you will surely remember your European adventures forever.

We are the Army's only forward-stationed Stryker Brigade Combat Team, poised on the frontier of freedom, and we are ready—ALWAYS READY—to fight and win! Our mission here is real and engaged. 2CR provides U.S. Army Europe and Africa with a lethal and agile force, capable of rapid deployment throughout the European Theatre, in order to Assure our allies, Deter our adversaries, and when ordered, Defend the NATO alliance.

Sponsorship is both important to you and important to us. Before you arrive, your assigned Sponsor will reach out to you and be available to assist with your move. Please provide the best contact method(s) on your Sponsorship Form, DA Form 5434 Section 2. You can also find information and step-by-step instructions to help you prepare for your arrival at the 2CR webpage <https://2cr.army.mil>. If you have a Facebook profile, please follow 2CR at <https://facebook.com/2ndCavalryRegiment/>.

Within this 2d Cavalry Regiment Welcome packet is useful information to guide you through your arrival and beyond. Please review this material thoroughly to ensure an ideal and smooth transition for you and your family. A permanent change of station (PCS) move outside of the continental United States (OCONUS) is incredibly challenging for Soldiers and Families. Your ability to leverage the most current information and to stay connected with your gaining unit and assigned sponsor are the surest ways to make your OCONUS PCS less challenging.

We look forward to your arrival to Germany and to our great Dragoon team!

Benjamin E. Pingel  
Command Sergeant Major, U.S. Army  
Regimental Command Sergeant Major

Robert S. McChrystal  
Colonel, U.S. Army  
Regimental Commander



## 2d CAVALRY REGIMENTAL SONG

### CHORUS

**We're gonna "Hit the Leather and Ride,"  
take it all in our stride,  
"Hit the Leather and Ride" all the way,  
and though we're glad to know the  
Envious are behind us,  
They'll have to eat Cavalry dust just to find us,  
Let every son of a gallopin' Yank  
jump in a saddle or tank,  
"Hit the Leather and Ride" all the way,  
Tho' we're strykerized, you'll recognize the outfit,  
We're ridin' hell bent for leather today**





## 2CR Squadrons

The 2d Cavalry Regiment (2CR) has a long history and can trace its lineage back to 1836. 2CR has the distinction of being the oldest, continuously serving Cavalry organization in the United States Army. The motto is **Toujours Pret**, which is French for **"Always Ready."**

The 4,700 Soldiers of 2CR are called Dragoons. This term comes from the history of mounted infantry, who used horses for mobility but fought dismounted on foot. Remember your Regiment and follow your Officers.

The 2d Cavalry Regiment consists of seven Squadrons and each Squadron has several Troops (and Batteries). They all serve a different purpose.



### 1<sup>st</sup> Squadron

War Eagle, Infantry Squadron



### FA Squadron

Hell, Artillery Squadron



### 2<sup>nd</sup> Squadron

Cougar, Infantry Squadron



### RS Squadron

Muleskinner, Support Squadron



### 3<sup>rd</sup> Squadron

Wolfpack, Infantry Squadron



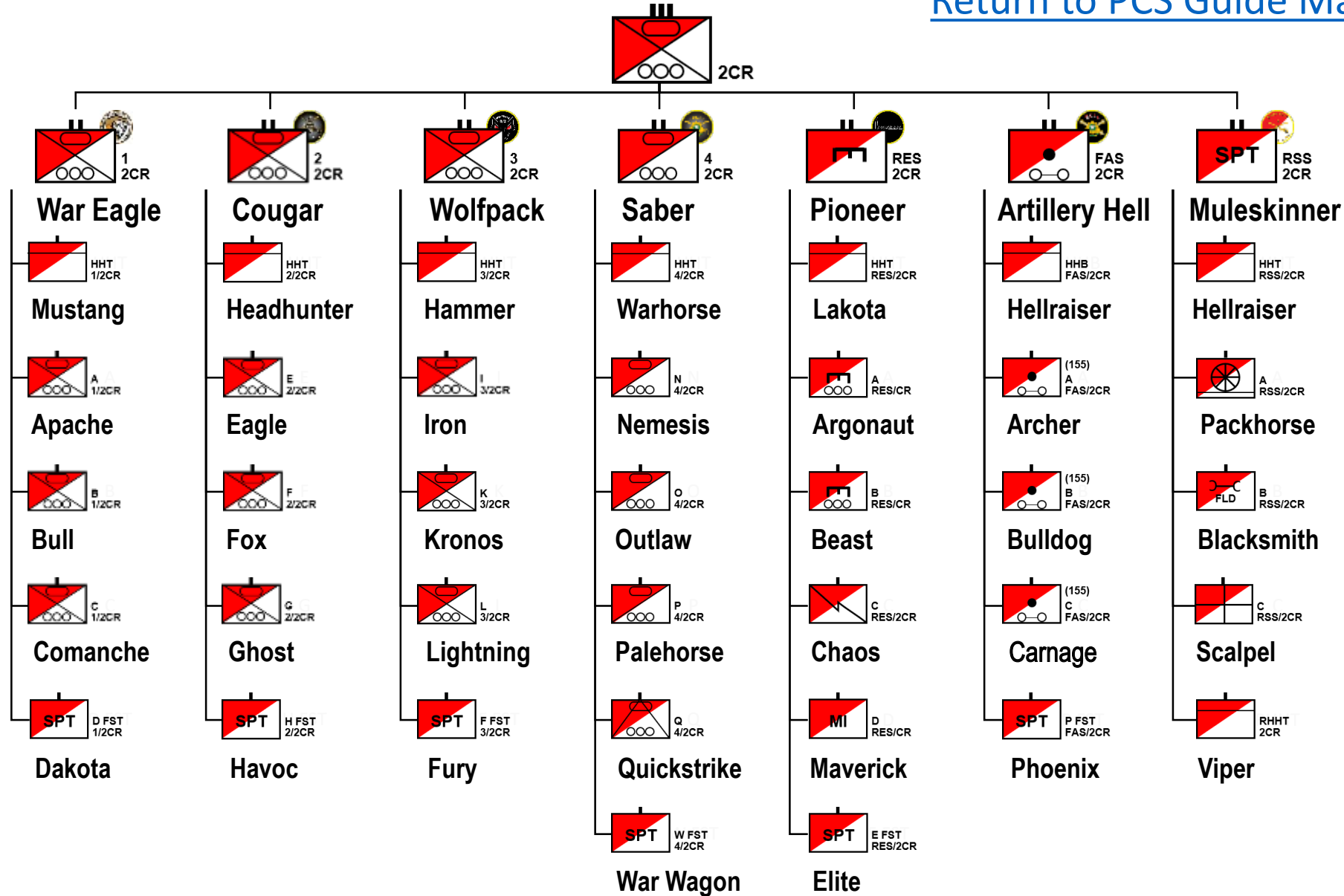
### RE Squadron

Pioneer, Engineering Squadron



### 4<sup>th</sup> Squadron

Saber, Cavalry Scouts Squadron



## Regiment/Squadron Contact Information



### 2d Cavalry Regiment:

*Staff Duty* (+49) 09662-83-5035 / DSN 314-476-5035 / 0888

*Chaplain* (+49) 09641-70-599-0403 / DSN 314-599-0403

*Sponsorship Coordinator* 09641-70-5990018 / DSN 314-599-0018

#### 1<sup>st</sup> Squadron – War Eagle BLDG 601

*Staff Duty* (+49) 09662-83-5228 / DSN 314-476-5228

*Chaplain* (+49) 09641-70-4765258 / DSN 314-476-5258

#### 2<sup>nd</sup> Squadron—Cougar BLDG 604

*Staff Duty* (+49) 09641-70-599-1515 / DSN 314-599-1515

*Chaplain* (+49) 09641-70-5990402 / DSN 314-599-0402

#### 3<sup>rd</sup> Squadron—Wolfpack BLDD 613

*Staff Duty* (+49) 09662-83-476-5120 / DSN 314-476-5120

*Chaplain* (+49) 09641-70-4765442 / DSN 314-476-5442

#### 4<sup>th</sup> Squadron—Saber BLDG 640

*Staff Duty* (+49) 09641-70-599-0213 / DSN 314-599-0213

*Chaplain* (+49) 09641-70-4765332 / DSN 314-476-5332

#### FA Squadron—Hell BLDG 630

*Staff Duty* (+49) 09641-70-599-3077 / DSN 314-599-3077

*Chaplain* (+49) 09641-70-5993070 / DSN 314-599-3070

#### RSS Squadron—Muleskinner BLDG 720

*Staff Duty* (+49) 09641-70-599-3500 / DSN 314-599-3500

*Chaplain* (+49) 09641-70-5993504 / DSN 314-599-3504

#### RES Squadron—Pioneer BLDG 627 (GRAF)

*Staff Duty* (+49) 09641-70-569-1306 / DSN 314-569-1306

*Chaplain* (+49) 09641-70-5691308 / DSN 314-569-1308



 [@2ndCavalryRegiment](#)

 [@2dcavalryregiment](#)

### Pro Tip:

\*If you are still in the U.S., you will dial the long staff duty or chaplain number to reach us.

-**Enter** the exit code: **011**

-**Enter** Germany's country code: **+49** (press the zero key for a few seconds and the zero will change to a plus sign)

-**Enter** the German area code **WITHOUT THE ZERO**: Most common are **Vilseck (09662)**, which you will enter as **9662**, **Graf (09641)**, which you will enter as **9641**, and **Landstuhl** for medical (**06371**, which you will enter as **6371**)

-**Enter** the number listed -For example, let's pretend to call 2CR Regiment Staff Duty:

-Your keypad should look like this: **011+499662835035**

**DON'T BE ALARMED!** German telephone numbers can range from 9-13 digits.

\*\*If you are still in the U.S. and would like to use DSN-to-DSN calling:

-Using a DSN phone, **Enter: 94**

-**Enter** the Europe DSN geographical code: **314**

-**Enter** the 7-digit number- For example, let's pretend to call 2CR Regiment Staff Duty:

-The number you enter should look like this: **943144765035**



## Total Army Sponsorship Program

**Hallo!** Soldiers PCSing to 2CR will be sponsored prior to and upon arrival. If you have not been contacted by your Sponsor, reach out to Mrs. Monique Brown at [monique.l.brown14.civ@mail.mil](mailto:monique.l.brown14.civ@mail.mil) (also found in Global under Brown, Monique L 2CR TASP Coordinator)

Soldiers will need to use the Army Career Tracker's (ACT) Total Army Sponsorship Program to initiate the DA Form 5434 (Sponsorship Program Counseling and Information Sheet) and request a sponsor. Sponsorship is required in order to process permanent change of station orders.

The Total Army Sponsorship Program, or TASP, mission is to help Soldiers, civilian employees, and their families better integrate into the U.S. Army, and to assist them when they transition to different units. Sponsorship applies to all active component Soldiers in ranks E-1 through O-6, according to [TASP REGULATION, ARMY REGULATION 600-8-8](#).

TASP ensures incoming Soldiers are assigned sponsors prior to reporting to their next duty station. Obtaining a sponsor reduces the stress of reporting to a new unit, enhances resiliency, and improves readiness among Soldiers and family members.



## How to Request a Sponsor

Note: This cannot be completed until you've received notification from Human Resources Command.

Log on to <https://actnow.army.mil>.

1. Click the "Messages" dropdown menu, and then "DA Form 5434."
2. Click "Create New Form."
3. Fill out all applicable sections (Sections 1, 2, 4, and 5).
4. Once completed, your sponsor will be notified and can begin providing you the information to better assist you in your move.
5. If your sponsor changes, you will receive notifications in the "Messages" section in ACT.

For essential information on sponsorship and check-in procedures, please speak with your Sponsor or Sponsorship Coordinator.

**\*Individual users are unable to see the sponsorship features on the Army Career Tracker, or ACT, website unless you are on assignment instructions, or you have been assigned as either a sponsor or unit sponsorship coordinator.**

**\*\*Upon arrival in-country, you will always be met by your Sponsor. If you're arriving via Patriot Express, your Sponsor will meet you after you get off the S-bus at BLDG 244 in Graf and if you're approved for traveling commercial air (O-6 memo, ETP), your Sponsor will meet you in Nuremburg, Munich, or Frankfurt. Please provide detailed instructions to your Sponsor so that we are tracking your arrival.**





# Total Army Sponsorship Program

## FAQ

### WHY CAN'T I SEE THE SPONSORSHIP PAGE?

If you received assignment instructions and still do not have a sponsorship tab on the ACT website, please contact the local office that issued your PCS orders and ask them to register your assignment in ACT.

### WHERE CAN I LOCATE THE DA FORM 5434

The DA Form 5434 is located under "Sponsorship" and can be accessed via the following sponsorship subpages:

DA Form 5434

DA Form 5434 (Early Access)

### I HAVE COMPLETED THE NECESSARY SECTIONS OF THE DA FORM 5434. WHY AM I STILL RECEIVING A NOTIFICATION THAT IT HAS NOT BEEN COMPLETED?

Users will continue to receive notifications stating that their DA Form 5434 is incomplete under the following conditions:

A Sponsor has completed section 3, however sections 1, 2, 4, or 5 are still pending completion by the incoming Soldier.

An incoming Soldier has completed sections 1, 2, 4, and 5, however the assigned Sponsor has yet to complete section 3.

### IF MY ASSIGNMENT HAS CHANGED, DO I HAVE TO RECREATE MY DA FORM 5434?

If the original orders have been canceled or revoked, the incoming Soldier will have to create a new DA Form 5434 once a new assignment is provided by Human Resources Command.

### WHO IS MY ASSIGNED SPONSOR?

Once you are assigned a sponsor, you'll receive a welcome letter from your Sponsorship Coordinator, which includes your assigned Sponsor and their contact information. Additionally, you can view information about your sponsor in section 3c of your DA Form 5434.

### IS THERE AN OPTION FOR ME TO UPLOAD INFORMATION TO THE DA FORM 5434?

Currently, there is no option to upload information to the DA Form 5434.

### WHO CAN I CALL IF I HAVE QUESTIONS?

You can call your Sponsor or the Regiment's TASP Coordinator at DSN (314) 599-0018 or +49 (0) 172 3773322.



## Requesting Command Sponsorship

Requesting command sponsorship will ensure that your eligible dependents may accompany you to your overseas tour with full military benefits, including but not limited to travel allowances, cost-of-living allowances, Household Goods eligibility, non-barracks housing, non-Space-A DoDEA school and Military Treatment Facility eligibility, as well as employment opportunities for spouses and eligible dependents.

If your original orders do not list the family members you plan to bring overseas by name, you will need to request command sponsorship through your chain of command.

Your current chain of command can provide you with specific instructions regarding requesting command sponsorship. The instructions will include completing forms and medical examinations. The EFMP (Exceptional Family Member Program) forms can be downloaded from the internet or given to you by your personnel department or MPD. Once those forms are completed, submitted, and approved by your gaining command, HRC will issue amended orders that list your family members by name.

Command sponsorship is not always approved. It is important to make alternative arrangements for family members who cannot accompany you.

## How do I start the process?

### For Soldiers located on/or near an Army post in the United States:

1. Soldier completes block 1-7 of DA Form 5888.
2. MPD completes block 8 of DA Form 5888.
3. Soldier completes DA Form 7246.
4. Soldier arranges medical appointments for screening at an MTF.
5. Army MTF EFMP provider completes DA Form 5888.
6. Soldier returns completed forms to personnel department.

[Return to PCS Guide Main Page](#)

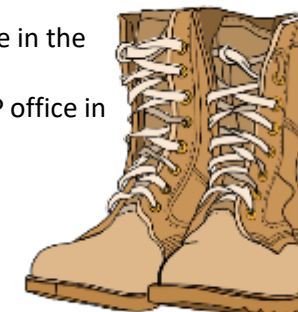
## How do I start the process? cont.

### For Soldiers in remote areas, far from an MTF:

1. Soldier should contact the EFMP office in the closest Army MTF for guidance.
2. To find your closest EFMP office, please visit [Families in Remote Areas \(Not Near MTF\) in U.S. \(army.mil\)](#)

### For Soldiers overseas, but family is in the United States:

1. Soldier contacts MPD at BLDG 244 on Graf.
2. Soldier Completes DA Form 5888.
3. EFMP office in Graf/Vilseck will forward information to EFMP Office in the U.S.
4. EFMP office in the U.S. will forward completed paperwork to EFMP office in Graf/Vilseck.



## Remember

During overseas screening, the Army looks at individual needs and not a diagnosis to determine the best match between needs and projected assignment locations. The program recognizes the uniqueness of the individual, which is why every family must appear in person for the screening activity. **Remember**, EFMP is designed to help families accompany their sponsor to the right overseas duty locations, **NOT TO EXCLUDE THEM!**

The command sponsorship process can take 3 weeks – 3 months (and longer) depending on your unique situation.

We **STRONGLY RECOMMEND** that you do not bring your family to Germany before command sponsorship is approved. Your family will be ineligible for certain benefits afforded to command sponsored families.



## Special Issuance Passport (SIP/No-fee Regular passport)

Special Issuance Passports (SIP) are issued to U.S. government employees, and when command sponsored, U.S. military dependents when they are traveling abroad at government expense. These passports are not valid for personal travel.

Dependents (who are U.S. citizens) traveling to USAG Bavaria will need an official passport with a Status of Forces Agreement (SOFA) stamp. Soldiers and family members will also need tourist passports to do any traveling outside of Germany.

The No-Fee passport has a blue cover and looks similar to a Regular or Tourist passport. On the last page of this passport, however, there is an endorsement which states, "This Passport is valid only for use in connection with the bearer's residence abroad as a member of the family of a member of the American Armed Forces on Active Duty outside the United States."

For passport inquiries for all military branches, except Marines in the U.S.

Commercial: (703) 545-0003 / 0004

Email: [usarmy.pentagon.hqda.mbx.lsw-ppv-customer-service@mail.mil](mailto:usarmy.pentagon.hqda.mbx.lsw-ppv-customer-service@mail.mil)

More information can be located at <https://travel.state.gov/content/travel/en/passports.html/>

Please also see **AE Reg 600-290 Passports and Visas**

## How Do I Get A No-Fee Passport?

The SOFA passport can be applied for through a U.S. military passport agent/office and ***MUST be obtained prior to overseas departure***. Non-U.S. citizen dependents must have a valid passport from their country of citizenship and a SOFA stamp.

Each dependent will need:

- Passport Application (DS-11 or DS-82, if renewing)
- 2 Passport Photos (2x2 inches)
- Proof of Citizenship (e.g., birth certificate, Consular Report of Birth Abroad, Naturalization Certificate, Certificate of Citizenship, Official passport [if renewing], Tourist Passport)
- Marriage certificate (for spouse); if previously married and divorced, all applicable marriage certificates and divorce decrees
- Sponsor's CAC and each Dependent ID (for photocopying)
- PCS Orders (which names dependents applying for no-fee passport)

Dependents under 16 years of age:

- Both biological/legal parents present to sign application
- If both biological/legal parents are not available, an original signed and notarized DS-3053, Statement of Consent: Issuance of a Passport to a Minor Under Age 16
- A copy of the Identification Card that was presented to the Notary by the other parent



## PRO TIP

Visit <https://www.fcg.pentagon.mil/fcg.cfm> from a CAC-enabled computer to access the **Foreign Clearance Guide** for instructions on gaining a SOFA stamp for your non-U.S. citizen dependent(s). Click the link on the left-hand side of the page for **U.S. European Command (USEUCOM) > Germany**

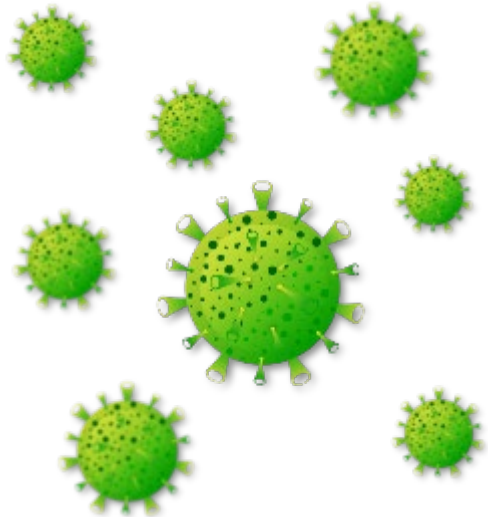


## COVID-19 Official Travel Guidelines and Vaccination Cards

7<sup>th</sup> Army Training Command guidance for COVID-19 restrictions and General Order Information may change in accordance with host nation policies and updated DoD/DA policy/guidelines. For the most up-to-date information on travel and restrictions, please visit <https://www.7atc.army.mil/COVID-19/>

### CDC VACCINATION CARD

Please arrive with CDC Vaccination Cards for all vaccinated individuals (this includes Soldier, Spouse, children, and other Command Sponsored family members). If your card has been damaged, you may also bring your Vaccine Administration Record [DD Form 2766C (Computer Generated)], which documents your completed vaccination series, in addition to your CDC card.



### What do you mean, fully-vaccinated?

You are fully-vaccinated on the 15<sup>th</sup> day after your last dose!



### Remember

Although you may be fully-vaccinated, host nation and/or DoD policies may change regarding quarantine requirements. Also, if there are any unvaccinated individuals in your family, regardless of age, they may have to quarantine upon arrival.

Also, any unaccompanied 2CR Soldiers, regardless of rank, will quarantine (if applicable) at the Isolation Facility (ISOFAC) located on Camp Aachen. You are not authorized to quarantine at any of the Army Lodging facilities.





[Return to PCS Guide Main Page](#)

## The Patriot Express

The Patriot Express, also known as *the Rotator*, or *Cat B flight*, is a DoD contracted commercial charter flight, which provides international support to travelers and their families who are on official duty. The 618<sup>th</sup> Air Operations Center at Scott AFB, IL, schedules these flights on a reoccurring basis, both to and from AMC commercial airports and military passenger terminals. These flights offer an array of in-flight amenities and operate like commercial airlines.

Amenities will vary between the contracted airlines. Available meals and beverages are comparable to those offered in commercial airline business class. Special meals, such as Kosher, diabetic, vegetarian, and meals for children may be available when requested 24 hours in advance.

Most of you will travel to Germany on the Patriot Express (unless you have a signed O-6 memo or other approved exemption for a commercial flight). Patriot Express flights board at Baltimore Washington International Airport (BWI). You will fly into BWI to board the Patriot Express and typically must retrieve your luggage from baggage claim and then move over to the AMC Terminal to check in.

Once you arrive at Ramstein Air Base, you will in-process (about 2 hours) and then take the S-bus (Sponsorship Bus) to USAG Bavaria Grafenwoehr (an approximately 5-hour trip). You will arrive at the Tower Barracks Reception Center (BLDG 244) for a quick briefing from Military Personnel Division (MPD). Your Regimental Sponsorship Coordinator and Sponsor will already be there to greet you and assist you in getting to your new home, barracks, or hotel room.

## Commercial Airport Arrivals

If your losing installation schedules you for a commercial flight into Nuremburg or Munich, you will have to coordinate your onward movement to Vilseck/Grafenwoehr – leverage your Sponsor.

***\*IMPORTANT\**** The bus movement from Ramstein AB to USAG-Bavaria is ***ONLY*** for Soldiers and Family Members arriving via the Patriot Express

## Check-in at BWI

Passenger check-in begins 6 hours prior to departure at AMC commercial airport locations. If passengers do not elect to check-in early, the required show time is no later than 2 hours and 20 minutes prior to departure at BWI. If you are departing from a military installation, please check with the passenger terminal personnel for specific check-in times. These times are designed to ensure on-time departures.

## Contact Information

For more information, visit the AMC Travel Website at <https://www.amc.af.mil/Home/AMC-Travel-Site> or contact your local Transportation Office, an AMC Passenger Terminal, or the AMC Commercial Airport location below:

### Baltimore/Washington International Thurgood Marshall Airport (BWI)

(410) 918-6900 or DSN 243-6900

Toll-Free (877) 429-4262

Fax (410) 918-6932 or DSN 243-6932

### Pro Tip!

Exchange U.S. currency for Euros at BWI!! German establishments do not accept American currency.





## Pets

### TRAVELING WITH PETS

Air Mobility Command (AMC) authorizes families traveling on PCS orders to transport pets on DoD-sponsored airlines. Pet space is very limited on Patriot Express flights and are offered on a first-come, first-served basis.

Pets, for the purposes of travel, are dogs and cats only.

Pet shipments will be in conjunction with PCS moves only IAW DoDI 4515.13. Pets normally travel in the aircraft baggage hold area but may be accepted for shipment in the cabin area if they meet the requirements (e.g. service animals).

To book your pet's space, contact your local transportation office as early as possible. In general, families are usually limited to two pets. Owners with more than two pets must notify the transportation office at least 15 days prior to the flight to reserve any possible space. Owners must also accompany pets on any AMC flights and pay the transport fees (not reimbursable).

Pet owners must provide a separate food and water supply source that can be fixed inside the container or attached to it and have food/water available to replenish your pet's needs.

Pet owners are responsible for obtaining all required documentation.

More information about traveling with pets can be found at <https://www.amc.af.mil/Home/AMC-Travel-Site/AMC-Pet-Travel-Page/>

## Service Animals

A recent memo to DoDI 4515.13 outlines the latest guidance on Service Animals and Service Animal Handler Responsibilities.

No later than 48 hours in advance of the date and time of departure, the service animal handler must provide the departing DoD passenger terminal with:

1. A signed Statement of Assurance (Template available at <https://www.amc.af.mil/Home/AMC-Travel-Site/AMC-Pet-Travel-Page/>)
  1. Service animal handler's name, email address, and phone number
  2. Service animal user's name if different from the handler and phone number
  3. Service animal name and description that includes appearance, height, and weight
  4. Current service animal information
    1. Rabies vaccination date and date vaccination expires
    2. Other health, disease, or conditions such as fleas, ticks, or a disease that could endanger people or other animals
    3. Veterinarian's name and phone number
    4. Name and contact information of service animal trainer or training organization that provided training to do work or perform tasks for the service animal user
5. The following statement: "I understand that if I knowingly make false statements on this document, I can be subject to Article 107 of the Uniform Code of Military Justice, or fines, or penalties.
6. Signature and date



## Pets, cont.

### Pet Travel Fees

Be prepared to pay associated fees. Fees are charged on a per-kennel/per mission basis depending on the combined weight (pet-kennel).

- The combined weight of ≤ 70 lbs will be charged \$125 (one piece of excess baggage).
- The combined weight of 71-140 lbs will be charged \$250 (two pieces of excess baggage)
- The combined weight of 141-150 lbs will be charged \$375 (three pieces of excess baggage)

Note: Fees may change. Check with your transportation office for current fees. Pet + kennel weighing greater than 150 lbs will not be accepted for shipment.

## Pets in Bavaria

When you land in Ramstein AB, head to the cargo location to pick up your pet. You may have to pay around €200 in international import fees.

Once your pet arrives in country, you will have 14 days to register them with your on-post Vet Clinic. This is a requirement even if you use an off-post veterinarian. If you are issued government-leased or on-post housing, you will also have to show proof of registration at the on-post Vet Clinic and notify the Housing Office of any pets.

For additional information contact the installation **Veterinary Treatment Facility**, Rose Barracks, Bldg. 222, DSN (314) 590-3888 or commercial +49 (0) 6371 9464 3888

## Canines: Class I & II

Class I canines are prohibited, and Class II canines are allowed with caveats.

### CLASS I CANINES:

Pit Bull Terrier, American Staffordshire Bull Terrier, Tosa Inu, Bandog, and any dog mixed with Class I.

Class I canines are prohibited from entering and residing in Government Quarters within Germany. Any mixed breeds containing the bloodline of Class I are also prohibited. Any Soldiers or DoD Civilians owning a Class I canine will remove it from Bavaria immediately, with no exceptions, and at own expense.

### CLASS II CANINES:

Alano, American Bulldog, Bullterrier, Bullmastiff, Cane Corso, Dog Argentino, Dogue de Bordeaux, Fila Brasileiro, Mastiff, Mastino Espaol, Perro de Presa Canario (Dogo Canario), Perro de Presa Mallorquin, Rottweiler, and any dog mixed with Class II.

Class II canines may be owned and brought into Bavaria, provided that the dog has a temperance test (not reimbursable) and is certified as peaceful by an authorized German Veterinarian. Any dog that fails this test must be removed.

Class II canines must be registered at the Office of Law and Public Order (Ordnungsamt) of their local community and with the post veterinary clinic. Failure to register may result in a large fine.

# HOUSING

Family Housing for U.S. Army Europe is 100% mandatory assignment to government controlled/leased quarters on/off-post. Grafenwoehr and Vilseck are a paired community. You will be housed within a 30-minute radius of the post you are assigned to.

## SINGLE, UNACCOMPANIED, NO DEPENDENTS?

E1-E6 will be assigned to UPH (barracks) on either Rose Barracks or Tower Barracks (Regimental Engineering Squadron [RES]). These quarters usually have a shared or private bedroom with either a shared or common bathroom.

E7 – above may qualify for an off-post, private rental if approved. Once approved, it is strongly recommended that you contact the Housing department on Graf before entering into any contract. Housing also maintains a listing of pre-approved landlords/properties. If you are not approved for off-post housing, you will reside in either Senior Enlisted Quarters (SEQ) or Bachelor Officers Quarters (BOQ), which are usually small, one-bedroom, furnished apartments with kitchenettes or a common kitchen per floor.

## SINGLE or MARRIED, UNACCOMPANIED, HAVE DEPENDENTS?

If you are eligible for stateside BAH for your stateside dependents, you will be assigned to an appropriate, rank-based barracks. Please see your unit/Squadron for more details.

## CONCURRENT TRAVEL

Concurrent Travel allows your family to accompany you to Germany. Review your PCS orders to see if they reflect “Concurrent Travel” AND your family members’ names. Housing is available on/off-post to you with Concurrent orders.

## DEFERRED TRAVEL

If Deferred Travel is listed on your orders, it means that your family is not authorized to travel with you to Germany due to delays in the approval process. Once approved, your family may travel to Germany within 120 days after orders have been issued.

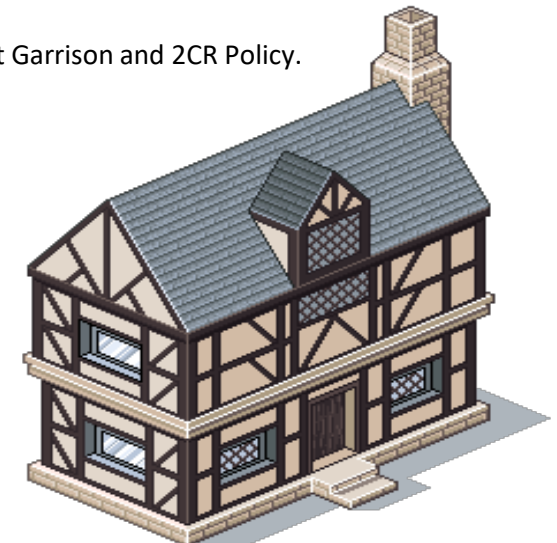


## Current PLANE-TO-PILLOW policy!!

Up to 30 days before travel, your Sponsor will add your family to the Housing Wait List with a copy of your concurrent orders.

7-10 days before your arrival, your Sponsor can send pictures and/or videos, at your request, of the (2) offers Housing makes available to you based on family size, rank, and EFMP considerations. If you decline one offer, you will receive a second offer. If you decline the second offer, your CoC may be informed.

This is current Garrison and 2CR Policy.







## Temporary Lodging

Due to the current Garrison **PLANE-TO-PILLOW policy**, most of you will NOT stay in a Temporary Lodging Facility (TLF); you will instead be transported directly into housing or the barracks. However, depending on your pre-approved circumstances, you may need to stay in one of the TLFs listed below:

### **Army Lodging Grafenwoehr (Tower Barracks)**

Building 619

Grafenwoehr, Germany 92655

Phone 011 49-964193640 or DSN (314) 475-1700

### **Army Lodging Vilseck (Rose Barracks)**

Building 275

Vilseck, Germany 92249

Phone 011 49-9662441104 or DSN (314) 476-1700

Not including an initial 10-day quarantine period (if applicable, and out-of-pocket), you will receive Temporary Lodging Allowance (TLA). Unlike its CONUS counterpart TLE, which you may use for 5 days prior to arriving in Germany, TLA is an OCONUS allowance intended to partially pay for lodging/meal expenses incurred by Soldiers and dependents while occupying temporary lodging as part of a PCS move.

You are normally authorized a maximum of 60 days TLA upon arrival at an OCONUS station, and 10 days upon departing an OCONUS station. For arrival TLA eligibility, you must actively seek permanent housing and must certify with Housing in Graf every 10 days. Payment is based on the per diem at the location of the temporary housing.

## Reserve Hotel Accommodations in Advance

Make reservations for temporary lodging prior to your arrival. On-post hotels accept reservations 180 days or more in advance. The closest hotel to 2CR Regimental Headquarters is the Kristall Inn (Army Lodging Vilseck) and if you are going to the Regimental Engineering Squadron, the Army Lodging Grafenwoehr.

Don't tarry. Hotel rooms on post are first come, first served.

Military personnel on orders must receive a Certificate or Statement of Non-availability from Army Lodging prior to staying in an off-post hotel.

Visit <https://www.home.army.mil/Bavaria/index.php/housing/lodging> for a listing of easy-to-commute off-post lodging facilities!





[Return to PCS Guide Main Page](#)

## Education - Schools

If you have school-aged children, you can pre-register prior to your arrival and finalize registration at the school. Go to [www.dodea.edu/DORS](http://www.dodea.edu/DORS) for more information.

### Local DoDEA Schools

Grafenwoehr Elementary School [www.dodea.edu/GrafenwoehrES](http://www.dodea.edu/GrafenwoehrES)  
 Netzaberg Elementary School [www.dodea.edu/NetzabergES](http://www.dodea.edu/NetzabergES)  
 Vilseck Elementary School [www.dodea.edu/VilseckES](http://www.dodea.edu/VilseckES)  
 Netzaberg Middle School [www.dodea.edu/NetzabergMS](http://www.dodea.edu/NetzabergMS)  
 Vilseck High School [www.dodea.edu/VilseckHS](http://www.dodea.edu/VilseckHS)



## Don't stress! Contact a School Liaison Officer (SLO)!

SLOs are your BEST educational resource for helping navigate this transition.

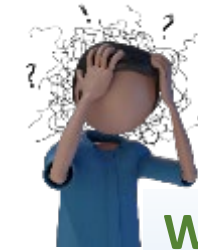
### The five core services offered by SLOs:

1. **Transition Assistance (PCS Cycle)** – assistance with “paving the way” to local schools through direct family interaction.
2. **Communication Link between Command, Schools, and Families** –they are subject matter experts helping to connect Command, school, and community resources for K-12 issues.
3. **Home School Linkage and Support**-assist families by gathering and sharing information on home schooling issues, policies, and legislation from local school districts, as well as helping leverage Child, Youth & School (CYSS) resources.
4. **Partnerships in Education**-creates a volunteer network between installation and community members.
5. **Post-Secondary Preparation**-leverage installation and school resources to provide graduating military students with access to post-secondary information and opportunities.

Use the QR Code to access the  
 Army Europe School Liaison  
 Officer PCS Guide 2021-2022!!



Click “Continue to Publication”



### What do I need to bring with me?

1. Orders pinpointing 2CR as the location of assignment with the student(s) name included.
2. SEALED school records OR contact information of previous school.
3. Immunization records.
4. Birth certificate or passport required only for Sure Start, Kindergarten, and 1<sup>st</sup> grade.
5. Two local emergency contact information (other than parent) and one stateside permanent contact.

### Which school will my child attend?

Your housing location will determine the elementary school that your student will attend. If you don't have housing when you arrive, you may register with the closest elementary school to your hotel. Students are bused to school from all locations.



[Return to PCS Guide Main Page](#)

## Education – Child Youth & School (CYS)

Childcare availability varies from one facility to the next. If you are on pinpoint orders to 2CR, you may contact Parent Central Services on Rose Barracks to register your child(ren) on the childcare waiting list **60-90 days prior** to arrival. To sign up, you should register with [MILITARYCHILDCARE.COM](http://MILITARYCHILDCARE.COM) (see flyer).

All children and youth are required to be registered before using any CYS program. The Parent Central Services Office located at Rose Barracks assists all in-processing families assigned to 2CR. Families who will be living at Rose Barracks, Tower Barracks (Grafenwoehr), and Netzaberg may register at the CYS office.

### WHAT IS NEEDED FOR REGISTRATION?

- Mailing/Physical address
- Unit name and address
- Home/Work/Cell Phone numbers
- AKO email address
- 2 Local emergency designees and phone numbers
- Current immunization/shot records
- Social Security Numbers (all Family members)
- LES/Pay stub
- CYSS Health Forms (parts A, B, and C) or Part A + School Physical
- Family Care Plan (for Single and Dual Military)





## Ready to Ride: The Steps

### Step One:

Obtain a USAREUR Driver's License. Instructions are listed on Page 21 of this guide and at <https://www.afsbeurope.army.mil/Logistics-Readiness-Centers/LRC-Bavaria/Transportation-Division/Drivers-Testing/>

### Step Two:

Once you receive notification that your Privately Owned Vehicle (POV) has arrived and is ready for pickup, the next step is to pass a safety inspection. Bring shipping documents, orders, stateside registration or vehicle title, your ID card, USAREUR license, proof of car insurance (international), and \$35 (credit card, check, and money order accepted) to Vehicle Registration. More information is located at <https://home.army.mil/Bavaria/index.php/vehicleregistration> and Page 19 of this guide.

### Step Three:

The third step is to officially register your vehicle with USAREUR. After your vehicle passes inspection, head over to Vehicle Registration to receive permanent tags. You must register your vehicle within 30 days of inspection. Bring the vehicle inspection sheet, your ID card, and USAREUR license, temporary registration and tags and the application for registry (AE 190-1A). Vehicle Registration is located on Grafenwoehr.

### Step Four:

Fuel prices at on-post gas stations in Europe are subsidized to closely match American prices. Without a fuel ration card, drivers who pump fuel at on-post gas stations will be forced to pay the local German price for gas—often much higher than prices offered on post. To get a fuel ration card for your vehicle, go to an AAFES PX or shopette. Be sure to add your spouse and any other anticipated drivers to the card during registration. You will need a fuel ration card for each vehicle you own.





## Ready to Ride: What You Should Know

### Vehicle Registration

Accompanied personnel are authorized three Privately Owned Vehicles (POVs) and two motorized and non-motorized recreational POVs. Unaccompanied or single personnel are authorized two POV and none motorized recreational POV. Requests for waivers to the limit of POVs must be approved by the Garrison commander.

Basic vehicle registration requirements: AE Form 190-1AA, stateside registration/title, double white insurance card, USAREUR driver's license, ID card, DD Form 788, registration fee \$35.

Registration appointments are first come, first served and go fast, especially during PCS season. Visit <https://bookvrppt.timetap.com> for all your registration needs, including appointments and checklists for requirements!

### Installation Regulation

In order to drive in Germany, either on-post or off-post, individuals on orders in Germany must have a valid USAREUR Driver's License. Individuals on TDY may utilize their stateside license along with TDY orders to operate a rental vehicle. Without a valid USAREUR license, individuals are not authorized to drive USAREUR plated vehicles.

All occupants are required to wear seat belts. Occupants between the ages of 0-12 are required to use another form of restraint. Due to low quantities of car seats and booster seats, you may want to bring one from CONUS. The 1<sup>st</sup> violation results in an automatic 7-day suspension of driving privileges. The 2<sup>nd</sup> offense is a 30-day suspension. The 3<sup>rd</sup> and subsequent offense is 90 days. Driving infractions are also reported to your CoC. You may be subject to additional repercussions.

### Installation Regulation, cont.

Cell phone usage, where driver is holding the mobile device, is prohibited. You also may not text, browse, or use the cell phone itself at any time during your trip if you are driving. You may use hands-free devices and/or headsets as long as hearing is not reduced (i.e., utilize systems with one ear device). This restriction applies to motor vehicles and bicycles. Violations are subject to fines.

Vehicles must also pass an inspection to be registered and eligible for USAREUR license plates. The frequency of inspection depends on the age of the vehicle. Inspection frequency ranges from annually, every two years, and every three years.

**NOTE:** Tinted windshields and front windows are illegal in Germany. While manufacturer tint is usually acceptable, there have been cases where the inspector required the removal of factory tint.





## Ready to Ride: Driving

### Winter Driving

German Road Traffic Ordinance stipulates that a POV may only be operated on snowy or icy roads, on black ice or slush if all wheels are equipped with M + S tires or approved all-season tires. Winter tires must have M & S letters or a snowflake symbol; all-season tires must show the symbols for all four seasons. Make sure all lights are in good working order, brakes are properly adjusted, that battery is properly charged, and battery terminals are clean and tight. Ensure all fluid and concentration levels are appropriate, including anti-freeze. Make sure that your windshield wiper blades are clean and in good condition.

Winter tires are required from October to April.

#### PROBLEMS IN THE WINTER

To assist you with any problems you may encounter on the roads in winter, it is a good idea to bring or buy a snow shovel, ice scraper and brush, tow chain or strap, tire chains, flashlight (with extra batteries), jumper cables, abrasive material (such as cat litter, salt, or traction mats), and a flashing yellow light.

### First Aid Kit

By host nation law, each vehicle you own must contain an approved First Aid Kit (DIN 13164) with warning triangle and reflective vest. In Germany, it is unlawful to bypass a vehicle accident without stopping to render aid, unless you would be significantly endangering yourself.

Approved First Aid Kits are available at the PX (though availability may vary) and at German pharmacies (apothke).

### Driver's Licenses

#### U.S. DRIVER'S LICENSES

Status of Forces Agreement (SOFA) requires that all U.S. personnel and family members assigned to Germany first have a valid U.S. driver's license, German, or other recognized country license in order to receive a USAREUR POV license. Personnel without a valid U.S. license, if wanting to receive a USAREUR license, will need to obtain a German license at your own expense. You would have to attend driver's training on the local economy (approx. \$2,000 in cost).

Individuals with graduated/limited/provisional driver's licenses will have the same restrictions listed on their USAREUR license.

#### USAREUR DRIVER'S LICENSE

To drive in Germany, U.S. personnel must have a valid stateside, German, or other recognized country driver's license to obtain a USAREUR driver's license. The driving age is 18 and above in most European countries. USAREUR driver's licenses are valid for 5 years. If your tour extends beyond 5 years, you must renew the license and pay the fee. Personnel must carry their U.S. license along with USAREUR license.

Keep in mind, only USAREUR license holders are authorized to drive a USAREUR registered vehicle. Not all NATO countries recognize USAREUR licenses. Personnel planning to travel outside of Germany should obtain an international driver's license.



## Ready to Ride: Driving

### U.S. Forces Driver's Training Program

#### TWO STEPS TO YOUR USAREUR LICENSE

People aged 18 and over must first complete online driver's training and pass the USAREUR driver's test on JOINT KNOWLEDGE ONLINE (Course IDs: USA-007 and USA-007B). CAC card users can log into JKO. CAC users can also sponsor dependents without CACs on the website. For applicants under age 18 who already possess a valid U.S. driver's license, their sponsor must request an exception to policy (ETP). The request should include the sponsor's name, rank, organization, APO mailing address, and a copy of the front and back of the applicant's driver's license.

The second and final step, after passing your online test, is to go to the Driver's Testing Station (DTTS). It takes a minimum of 48 hours for the scores to be processed to DTTS. You can then fill out an application (190-IT), take an eye test, and pay a fee for the USAREUR driver's license. The current fee is \$20 US. Personnel will receive a temporary driver's license on-site. The hard copy license will be sent to your APO box within 3-4 weeks.

If you (the Soldier) haven't taken and passed your JKO driver's test by your mandatory, assigned driver's training date (which includes the 48 hour wait time), you will need to take the one-day, in-person course scheduled for you during in-processing.

#### Grafenwoehr DTTS (For Vilseck as well)

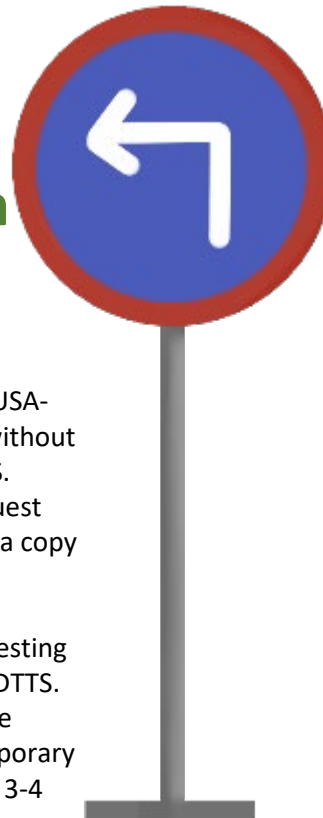
Tower Barracks, BLDG 301, room 200 A/B

CIV: 09641-83-8187 / 8120 / 8240 / 8243

DSN: (314) 475-8187 / 8120 / 8240 / 8243

By Appointment only!!

For more information, visit <https://www.home.army.mil/Bavaria/index.php/newcomers>



### Exam Prep

Look up the AEP 190-34 U.S. Army Europe Driver's Handbook online at <https://media.defense.gov/2010/Nov/16/2001921849/-1/-1/0/AEP190-34.pdf>

You should study this book as the test material is significantly different than U.S. drivers' tests. There is a 50% fail rate of testers taking the initial 100-question test.

### International Driver's Licenses

#### PRIOR TO ARRIVAL

If you want to travel around Europe outside of Germany, you should stop by your **local AAA (Triple A)** or **AATA (American Automobile Touring Alliance)** for an International Driving Permit before you arrive, for \$20 per permit.

Visit AAA at <https://www.aaa.com/vacation/idpf.html>

Visit AATA at <http://aataidp.com/>

#### ALREADY HERE?

Where you make an appointment is based on your CMR Address! You will need your USAREUR driver's license, ID card, and €20.

#### CMR 411:

Address: Führerscheinstelle, Beethovenstrasse 7, Amberg 92224

Phone number: 09621-39840

#### CMR 415:

Address: Jahnstrasse 18, Eschenbach 92676

Phone number: 09602-79-3382

\*The International Drivers Permit requirement is found on the USAG Bavaria official site at <https://www.army.mil/Bavaria/index.php/Directorates/DES/drivers-license>



## Ready to Ride: Driving

### ESSO Card

You will need to get an ESSO card for fuel. As U.S. military, you are eligible to pay U.S. prices for fuel instead of expensive German prices, but you need an ESSO card. Each vehicle is allotted a certain amount of fuel per month at the discounted price, but if you go over, you can always fill up off post. The only gas station (“tankstelle” in German) off post that will accept your card is an ESSO station. You must load money onto your ESSO card before the German ESSO station will accept it (call the number on the back of the card and the transaction is free and immediately available if you add money via the automated system—you will need at least \$1 on the card). You don’t have to load the card if you’re buying fuel on post.

\*ESSO cards are only accepted at German ESSO stations. You cannot use the ESSO card at ESSO stations in other countries.

#### HOW DO I GET MY ESSO CARD?

Take your ID card and your U.S. POV registration certificate (AE Form 190-1A) to the PX’s customer service counter or to the shopette. You get one ESSO card per vehicle, but if there are additional drivers, you may request an additional card.

Visit <https://aafes.com/exchange-stores/overseas/Germany-fuel-ration/> for more information including ESSO card usage training videos and FAQs .



## Motorcycle Licenses

Per USAREUR guidelines Soldiers, dependents, and U.S. civilians must have a motorcycle endorsement on their stateside license before arriving in Germany. Service members are required to attend the USAREUR motorcycle orientation course at their local DTTS. In addition to the endorsement, SMs must be current with one of the following:

1. **Initial Training:** Motorcycle Safety Foundation’s (MSF) Basic Rider Course (BRC) or state-approved curriculum for motorcycle operator’s safety training. This is a one-time requirement for SMs.
2. **Intermediate Training:** Based on the kind of motorcycle owned and operated, you will complete BRC-2, Military Sport Bike Riders Course, Advance Riders Course, or DoD Component defined curriculum within a year of completing initial BRC training.
3. **Sustainment Refresher Training:** Complete training every five years (BRC2, MSRC, or ARC).

## Car Repairs

There’s a Car Care Center on Tower Barracks that can help. Both posts also have an Auto Skills Center where you can do some work yourself with a bit of help. Otherwise, there are several off-post car mechanics in the area—don’t forget to take a VAT form with you!

Both PXs sell regular car maintenance items and you can also order parts through the Car Care Center. Online, sites like [www.rockauto.com](http://www.rockauto.com) usually ship to your APO. If you have a U.S. spec car, this can sometimes save you a lot of money as it is difficult for off-post mechanics to order U.S. parts.

Purchase oil and oil filters from the PX and bring to the mechanic to save money!!





## Ready to Ride: Driving

### Alcohol Consumption

The amount of alcohol consumed by a person is usually detected by a breathalyzer device or a blood test, both of which can be requested by the German Polizei without probable cause. Unlike in the U.S., you cannot refuse the breathalyzer from Polizei and they can also compel you to ride to their station for a blood test.

Alcohol levels are measured by the weight of the alcohol in a certain volume of blood. This is called Blood Alcohol Concentration (BAC). In the U.S., it is illegal to operate a vehicle with a BAC of .08 or higher. However, in Germany it is illegal to operate a vehicle with a BAC of .05 or higher and .03 or higher where there has been an accident.

#### WHY DO I NEED TO KNOW THIS?

Alcohol content for a German beer ranges between 4.5% and 5.5% but can get as high as 16%. U.S. beers usually have an alcohol content of 3.5-3.8%. Therefore, the BAC in Germany is lower and the beers are stronger.

If you've had a beer (or any other alcohol) and you cannot find a designated driver, contact Regimental Staff Duty for a ride, regardless of your location or the time. The Regimental Designated Driver Program is a non-punitive program that saves lives.

\*vehicles, for the purposes of DUI/DWI in Germany include cars, trucks, motorcycles and any other motorized vehicle; also bicycles and e-scooters

## Rules of the Road

**Speed limits:** The speed limit is 50 km/h (31 mph) in urban areas and 100 km/h (62 mph) outside city limits (unless otherwise indicated). On the autobahn the speed limit is 130 km/h (80 mph) (unless otherwise posted). Driving less than 60km/h (37 mph) on the autobahn is illegal (unless otherwise posted).

**Important Documents:** Have your USAREUR license, your valid U.S. driver's license, proof of insurance, and vehicle registration in the car while driving.

**Rescue Lane:** If you're driving on the autobahn and there is congestion, you must create a rescue lane even if there has been no accident.

**Rude Gestures:** You will probably be reported by the person you "flipped off" and face a hefty fine.

**Disrespecting an Officer:** Showing contempt or disrespect to Polizei is against the law. The offense is called "**Beamteninbeleidung**" and means "insulting a public official or civil servant while in the course of duty." The law does not define insult, so any rude gesture or word could be considered offensive. Fines have been known to range from €25 to thousands of euros and up to a year in jail, depending on the severity of the offense.

#### Common German Road Signs:

- "Ausfahrt" – Exit
- "Einbahnstrasse" – One-way street
- "Einfahrt" – Entrance
- "Nebel" – Fog
- "Rollspit" – Loose gravel
- "Schnee" – Snow
- "Stau" – Traffic (congestion)
- "Umleitung" – Detour
- "Unfall" – Accident





## Communication – Cell Phones

There are three popular ways to receive cell phone service in Germany:

1. Check with your U.S. provider regarding an international plan (e.g., T-Mobile's Magenta Military Plan)
2. Sign a contract with a German provider. TKS and Telekom (T-Mobile) are the most commonly used providers. TKS is located in the Rose Barracks and Tower Barracks PX. Telekom has locations in the city of Vilseck and outside of Gate 1 of Tower Barracks.
3. Pay as You Go (pre-paid) option.

### WHAT YOU SHOULD KNOW

**International Plans:** Most major cell phone providers offer a plan or special add-on that allows you to use your phone across Germany and other countries you travel to. A primary benefit is keeping the same phone number that you have from your home country and not needing to terminate your current contract. Having a good data plan and using chat apps like "WhatsApp" makes it even simpler.

**German Contract:** The largest German providers require contracts. You will need a registered address in Germany and a German bank account that has an IBAN (e.g., Community Bank and Service Credit Union on Rose and Tower Barracks). Be mindful of the "Mindestlaufzeit" (minimum contract length) and "Kündigungsfrist" (cancellation period). Most contracts are for a minimum two-year period, regardless of whether you bring a phone with you. That means you cannot break the contract in the first two years. Additionally, the cancellation period usually requires that you give notice at least three months before the end of your contract, or else it will renew for another year. For example, if you start a contract in August 2020, then you can't stop paying before August 2022, and you need to provide notice of your desire to cancel no later than May 2022 or else you're stuck paying until August 2023.

**Pay as You Go:** There are a lot of Pay as You Go options, such as Aldi Talk, Lidl Connect, and Congstar by Telekom. Load cards cost around €10 and you can buy them at grocery stores and cell phone stores. Minutes and data are deducted from your pre-paid load as you use them. If you have no credit, you will simply be notified that you are not able to complete the call, send the message, or access the Internet.

[Return to PCS Guide Main Page](#)

If you don't switch to some form of international plan before you arrive in Germany, you won't have cell phone/data service once when you get here!

## Using Your American Plan in Europe

### TOP THREE PICKS



**3<sup>rd</sup> – VERIZON:** Verizon isn't the best in Europe. International Plans are expensive, and you don't get much data. They have a "daily plan," which won't work because you'll be here 365 days a year. Their "monthly plan" is an extra \$100 a month with only 5GBs of data high fees for overage.

**2<sup>nd</sup> –AT&T:** AT&T also has a "daily plan" that is similar to Verizon's and the "monthly plan" is around \$140 extra with 6GBs per month of data and similarly steep overage costs.

**1<sup>st</sup> –T-Mobile:** T-Mobile has the best options. T-Mobile has two International Plans: their Magenta Military Plan and the Magenta Global plan with up to 15GBs of high-speed data and LTE coverage for \$50 extra per line per month.



## Communication – Mail

### APO, AE

Each Soldier (and any command sponsored dependents) is entitled to an overseas Army/Air Post Office (APO) address offered by the United States Postal Service (USPS). With your APO you can receive mail within the U.S. postal system. Your post office box is located on either Rose or Tower Barracks in the Community Mail Room.

#### BREAK DOWN

Your Community Mail Room (CMR) is either on **Rose Barracks (411)** or **Tower Barracks (415)**. Your box number is determined by the post office and provided to you when you turn in your orders. Your Army/Air Post Office, or APO is located in Armed Forces Europe (**AE**) and the postal code for your CMR is **09112** if your CMR is in Rose Barracks or **09114** if your CMR is in Tower Barracks. Therefore, if your name is John Smith, then your mailing address will look like this example:

#### John Smith

CMR 411 Box XXX

APO, AE 09112 (ONLY if your box is in Rose Barracks)

-or-

#### John Smith

CMR 415 Box XXX

APO, AE 09114 (ONLY if your box is in Tower Barracks)

**\*Most 2CR CMR boxes are in Rose Barracks unless you are assigned to Tower Barracks (i.e., Regimental Engineering Squadron – RES)**

### APO, AE, cont.

#### THE DOs and DON'Ts

**DON'T** put the word “Germany” or any other city or country in your APO address (or anyone sending mail to you). You are using the American postal system.

**DO** send your orders ahead to your Sponsor so that they can get your APO box set up before you come! You can then mail items to yourself ahead of time.

**DO** send letters and packages up to 70lbs to APO when out of the area and near another Military Postal Service. Packages sent APO/FPO/DPO to APO are free through MPS! In lieu of postage, you must clearly write “MPS” on the upper right hand of the letter or parcel and the item must not enter the USPS network in the United States.

For more information on mailing to APO and its restrictions, please visit

<https://www.usps.com/ship/apo-fpo-dpo.htm?pov=international>

or

<https://www.hrc.army.mil/content/Department%20of%20the%20Army%20Postal%20Program%20FAQ>



## APO, AE: Shipping from the U.S.

You'll find that many merchants will ship to an APO address. The delivery timelines vary greatly. Amazon is a great option and with a Prime Membership you get faster shipping (usually 10-14 calendar days).

You will also find that some items found on familiar retail websites are not available to ship to APO. Some items are restricted from APO shipping, however, there are still other items which are acceptable that a company will just not send to APO.

All items sent to APO and from APO to the U.S. requires a customs form (PS Form 2976-R).

Your sponsor can assist you with establishing your APO address prior to your arrival.

### WAIT TIMES

Items shipped through the USPS Chicago APO Super Hub will usually arrive to your APO box within 10-14 days from the date it was shipped (provided it reaches Chicago within a day or two).

Items shipped through the New Jersey processing center are put on a ship and will usually arrive to your APO box after 30 days from the day it was shipped in New Jersey. And although you may receive a tracking number for these packages from the retailer, the package may not show any movement from its arrival in New Jersey up until the day the package is ready for pick-up in RB or TB.

### PROHIBITED ITEMS

Aerosols, air bags, alcoholic beverages, ammunition, cigarettes, dry ice, explosives, fresh fruits and vegetables, gasoline, hemp-based products (including cannabidiol [CBD]), marijuana, nail polish, perfumes (containing alcohol), poisons, etc.

Please visit <https://www.usps.com/international/shipping-restrictions.htm> for more information

## Deutsche Post, DHL, and others

You can also receive mail to your physical (house) on the German system. For money-saving purposes, it is usually cheaper to send packages from the U.S. to your APO address and packages from Germany to your physical address. For example, Amazon.com is the U.S. version of Amazon and you would ship those packages to your APO address (tax free). Amazon.de is the German version and you would ship parcels to your physical address.

If you live on post, some German companies can deliver to your house. Organizations such as DHL have access privileges and can deliver to your doorstep. Missed deliveries are also not an issue. DHL, for example, will either attempt delivery again or take your parcel to an authorized location, such as a Deutsche Post location or German post office.

If you live on-post Rose Barracks, here is what your address will look like if your name is John Smith and you live in building 2014, unit B (your street name is never used):

### John Smith

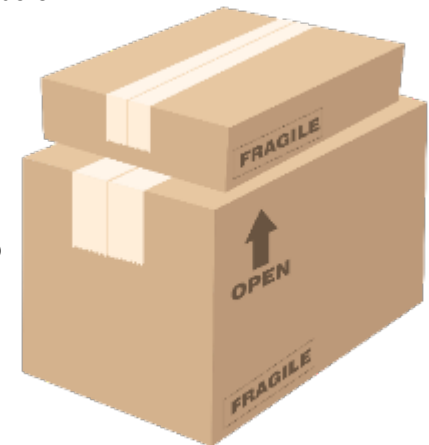
Südlager 2014 B  
92249 Vilseck Bayern

★ Südlager is Deutsch for "South Camp," which is what Germans called Rose Barracks

Some common German parcel companies cannot access post and/or will not attempt delivery—*Hermes*, for example. Sometimes you can add a delivery note and request that a driver call when they arrive so that you can meet them at the gate. Others will sometimes request that their packages are left at a pick-up location. It is up to you how you accept your delivery.

\*Military Communities such as Sorghof (right outside of Rose Barracks) and Netzaberg (right outside of Tower Barracks) are not considered to be on-post and is accessible to all, including delivery drivers

\*\*Items sent to your German address may incur additional customs fees depending on the origin of the package ( especially from the U.S. and other non-EU countries)







## Finances

### Overseas Housing Allowance (OHA)

The military has created an Overseas Housing Allowance to help members deal with the problem of leasing housing off-base, on the economy.

OHA is a tax-free monthly allowance paid to service members stationed OCONUS – AND- who are authorized, with a Certificate of Non-Availability, to live in private housing. OHA helps to pay for housing and includes rent and utility/recurring maintenance expenses.

OHA will appear as one payment on your LES but contains your rent payment plus an amount determined by the DoD to cover the utility and recurring maintenance expenses for your location.

The amount of the rent portion of the OHA payment never exceeds the rent cost, and there are limits which vary based on paygrade and number of dependents.

Your OHA can change every month based on the exchange rate between Euro and Dollar.

Dual military couples living off base are treated as separate entities for purposes of OHA. You are both eligible to claim OHA costs up to the amount of your actual OHA limit; however, your total payment between the two of you will not exceed the actual amount of the rent. If there are dependents, one of you will receive the with-dependents rate (usually the most senior).

In other words, you cannot pocket OHA as you can with BAH.

### Move-in Housing Allowance (MIHA)

MIHA is tax-free and is paid when you move in, helping to offset costs associated with initial occupancy. There are four different types of MIHA. You may be eligible for some or all of them, depending on your local situation. These include:

1. **Move-In Housing Allowance/Miscellaneous:** This is a set amount paid in a lump-sum and no receipts are required. This is used to buy necessities like sinks, toilets, light fixtures, kitchen cabinets, and a refrigerator and stove (which sometimes are not provided in overseas dwellings).
2. **Move-In Housing Allowance/Rent:** This covers all rent related expenses, receipts are required. These expenses are fixed, one-time, non-refundable charges paid to the landlord, which the member must pay before moving in. Examples are real estate agent fees, redecoration fees, and one-time lease taxes.
3. **Move-In Housing Allowance/Security:** These security related expenses are for designated areas where dwellings must be modified to minimize exposure to a terrorist or criminal threat. Receipts are required. Expenditures which are not related to the physical dwelling aren't allowed. Move-In Housing Allowance security payments must be approved by the senior officer in the country.
4. **The 4<sup>th</sup> Type Does Not Apply to Germany**

For more information about OHA, please visit  
<https://www.defensetravel.dod.mil/site/faqoha.cfm>



## Finances

### German Bank Account

While you aren't required to open an account overseas on a military installation, there are several advantages to having a German bank account.

There may be bills that require payment in host nation currency. It may be your rent or your utilities. You also may want financing to buy a "beater" car or that tax-free BMW that you've always dreamed of. For that, you'll need a local bank.

#### Service Credit Union

Rose Barracks BLDG 224  
Vilseck, Germany 92249

#### Service Credit Union

Tower Barracks BLDG 148  
Grafenwoehr, Germany 92655

#### Community Bank (operated by Bank of America)

Rose Barracks BLDG 224  
Vilseck, Germany 92249

#### Community Bank (operated by Bank of America)

Tower Barracks BLDG 105  
Grafenwoehr, Germany 92655

## VAT Forms

Germany imposes a Value-Added Tax (VAT) of either 19% or a reduced rate of 7% on most items/services purchased. This tax is similar to a sales tax in the U.S., but it is generally already added into the price.

- 19% VAT is charged on most items/service.
- 7% is charged on basic food staple items and things like magazines and books

You may be eligible to use the U.S. Forces Tax-Relief Program to avoid paying this tax. Please be aware that there are restrictions, and that intentional or unintentional abuse of the program will lead to personal tax liabilities, expulsion from the program, Commander or Supervisor notification, and it may be considered unlawful tax evasion.



## PRICING

**NF-1 VAT Forms (purchases under €2,499.99)** - \$5/per form (initial purchase of forms discounted to \$40 for 10 forms)

**NF-2 VAT Forms (purchases over €2,500.00)** - \$65/per form

\*Not all stores accept VAT. Ask First!



## Finances

### Buying a Car

There is an **Auto Resale Lot** in Tower Barracks by BLDG 607, between the PX and Burger King, where people park their cars to be sold. You may hear others refer to it as the “Lemon Lot.”

You may also buy a German-spec car, however, it is strongly suggested that you not buy or finance a late-model German-spec car because it can be expensive to alter the German-spec car to U.S. specifications if you want to ship it back to the U.S. Most German-spec car owners sell the car before PCSing.

It is a good thing that military personnel stationed in Europe have an opportunity to buy a U.S. specification new car at a substantial price advantage. No local taxes are due when you are located outside of the United States, and, if you are eligible, you can ship it back to the U.S. free of charge.

In order to take advantage of the tax-free benefit, you must be active duty U.S. Military, a DOD Civilian ID Card holder, or a member of a U.S. diplomatic mission stationed in Germany.

### Car Insurance

All persons registering a car with USAREUR must have a policy recognized by the host country authorities. German law requires minimum coverage of €7,500,000 for personal injury; €1,000,000 for property damage; and €50,000 for damages other than personal injury or property.

You are required to have an Insurance Confirmation Card (ICC) in order to register your vehicle.

Popular companies, which provide automobile insurance are:

**The United Services Automobile Association (USAA)** at <https://www.usaa.com>

**Mirascon Insurance Solution** (GEICO’s German counterpart) at <https://www.mirascon.com>

### Popular Car Dealerships

**Military Auto Source** is the only on-post, factory-authorized distributor set up to sell American spec vehicles to you. They have a dealership on both Rose and Tower Barracks (both within walking distance of the PXs). They currently offer sales of Volkswagen, Toyota, Chrysler, Dodge, and other popular brands.

**BMW Military Sales (Bavarian Motor Cars GmbH)** is set up in just outside of Tower Barracks to offer custom built BMWs and MINIs with U.S. specifications. BMW has a website with details on their Military Sales programs.

**Volvo Cars Military Sales** is one of the manufacturers that can offer you a host of savings and benefits.





## The Lay of the Land

### Recycling

Around 68% of all household waste in Germany is recycled. Familiarize yourself with the recycling system in Germany. Throwing everything into one waste bin is illegal here. Typically, plastics, paper, different-colored glass, bio-waste, and cans should be separated for recycling, while non-recyclable waste has its own bin. If in doubt, ask a neighbor.

#### **Refuse or “Restmüll”**

Kitchen and food waste, such as fruit and vegetable remains, leftovers, coffee filters and other organic and compostable waste; used paper products; diapers; torn clothing; ceramics and porcelain; pet litter and non-recyclable materials.

#### **Paper or “Papier”**

Cardboard, envelopes, magazines, paper egg cartons and wrapping paper.

#### **Plastic or “Verpackung”**

Plastic bags and bottles, Styrofoam, milk cartons, and aluminum.

#### **Metal or “Dosen”**

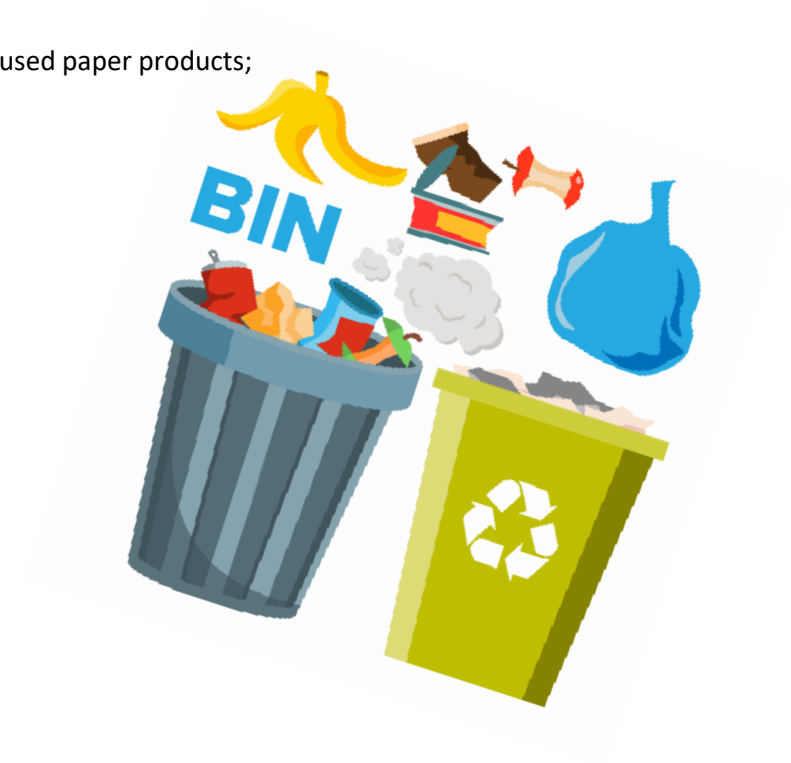
Food cans, soda cans, empty, non-hazardous spray cans and small metal items.

#### **Glass or “Glas”**

Glass bottles and jars, separated by color: clear, brown or green.

#### **Bio waste or “Biomüll”**

Plant-based biodegradable or compostable materials, such as fruit peels, coffee grinds, eggshells, and leftover vegetables.

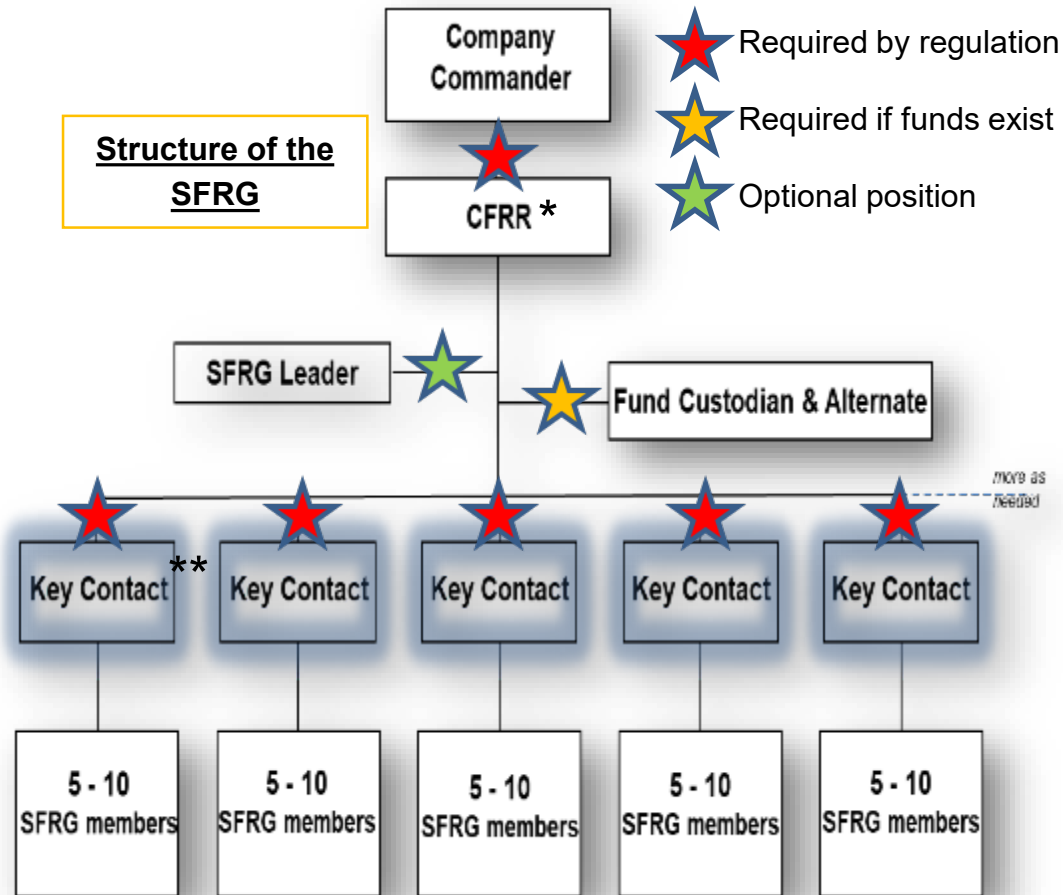




# Soldier and Family Readiness Groups (SFRGs)



Each Troop/Battery in 2CR has an SFRG. Please contact [usarmy.bavaria.2-cav-regt.mbx.sfrg@army.mil](mailto:usarmy.bavaria.2-cav-regt.mbx.sfrg@army.mil), to reach the Regimental Family Readiness Support Assistant to get connected with yours today!



## Intent of the SFRG

The SFRG “incorporates unit personnel, their family members, volunteers, and single soldiers into an integrated communication, information, and support network.”

- Shift towards “establishing high-functioning command information networks that communicate, inform, and connect commands with all unit personnel, family members, and volunteers that enable a network of mutual support.”
- Shift away from social activities (social activities can still occur for the purpose of strengthening the communication network)
- Shift away from fundraising (having informal funds in NOT required and fundraising should not be a major focus)

## Volunteers Wanted!

Though SFRG volunteers are no longer required, they are most welcome at every SFRG. Not only can volunteering for your SFRG help to ensure that yourself and other members receive timely Command Information, volunteering has other benefits as well.

- ✓ Get to know people at your new duty station.
- ✓ Acquire skills that can be added to your resume for future employment.
- ✓ Network with Senior Advisors and other members of the 2<sup>nd</sup> Cavalry Regiment Community.
- ✓ And so much more!

\*Command Family Readiness Representatives (CFRRs) - Soldiers who assist the commander in executing the essential elements of the SFRG

\*\*Key Contact - volunteers who establish a network to telephonically or electronically convey information of interest and support to Family members of the unit's Soldier and Family Readiness Group (SFRG)

# Solider and Family Readiness Groups (SFRGs) – cont.

Page 32



[Return to PCS Guide Main Page](#)

## Find us on Social Media!

(Not all Troops have a Facebook group)

### 1<sup>st</sup> Squadron

<a href="https://www.facebook.com/WarEagles">https://www.facebook.com/WarEagles</a>	Squadron Page
<a href="https://www.facebook.com/groups/mustanghomefront/">https://www.facebook.com/groups/mustanghomefront/</a>	Mustang
<a href="https://www.facebook.com/groups/apachehomefront/">https://www.facebook.com/groups/apachehomefront/</a>	Apache
<a href="https://www.facebook.com/groups/667540543911417/">https://www.facebook.com/groups/667540543911417/</a>	Comanche
<a href="https://www.facebook.com/groups/366199608147307/">https://www.facebook.com/groups/366199608147307/</a>	Dakota
<a href="https://www.facebook.com/groups/2292527477480414/">https://www.facebook.com/groups/2292527477480414/</a>	Bull

### 2nd Squadron

<a href="https://www.facebook.com/2dsquadron2dcavalryregiment">https://www.facebook.com/2dsquadron2dcavalryregiment</a>	Squadron Page
<a href="https://www.facebook.com/groups/foxtroopsfrg/">https://www.facebook.com/groups/foxtroopsfrg/</a>	Fox
<a href="https://www.facebook.com/groups/sfrgghosttroop/">https://www.facebook.com/groups/sfrgghosttroop/</a>	Ghost
<a href="https://www.facebook.com/groups/338978826698602/">https://www.facebook.com/groups/338978826698602/</a>	Eagle
<a href="https://www.facebook.com/groups/headhunterfamily">https://www.facebook.com/groups/headhunterfamily</a>	HHT
<a href="https://www.facebook.com/groups/havoc.troop.sfrg/">https://www.facebook.com/groups/havoc.troop.sfrg/</a>	Havoc

### 3<sup>rd</sup> Squadron

<a href="https://www.facebook.com/3rdSquadron2ndCavalry">https://www.facebook.com/3rdSquadron2ndCavalry</a>	Squadron Page
<a href="https://www.facebook.com/groups/2935116693382459/">https://www.facebook.com/groups/2935116693382459/</a>	Iron
<a href="https://www.facebook.com/groups/FuryTroopSFRG/">https://www.facebook.com/groups/FuryTroopSFRG/</a>	Fury

### 4th Squadron

<a href="https://www.facebook.com/4thSquadron2dCavalryRegiment">https://www.facebook.com/4thSquadron2dCavalryRegiment</a>	Squadron Page
<a href="https://www.facebook.com/groups/453135773088819/">https://www.facebook.com/groups/453135773088819/</a>	Palehorse
<a href="https://www.facebook.com/groups/945519609293858/">https://www.facebook.com/groups/945519609293858/</a>	Nemesis

### Field Artillery Squadron

<a href="https://www.facebook.com/FieldArtillerySquadron2CR">https://www.facebook.com/FieldArtillerySquadron2CR</a>	Squadron Page
<a href="https://www.facebook.com/groups/418084185527227/">https://www.facebook.com/groups/418084185527227/</a>	HHB
<a href="https://www.facebook.com/groups/512435126364800/">https://www.facebook.com/groups/512435126364800/</a>	Archer
<a href="https://www.facebook.com/groups/628493700993065/">https://www.facebook.com/groups/628493700993065/</a>	Bulldog
<a href="https://www.facebook.com/groups/1175902195921459/">https://www.facebook.com/groups/1175902195921459/</a>	Cobra
<a href="https://www.facebook.com/groups/754776031574165/">https://www.facebook.com/groups/754776031574165/</a>	FSB

### Regimental Support Squadron

<a href="https://www.facebook.com/RSS.2CR">https://www.facebook.com/RSS.2CR</a>	Squadron Page
<a href="https://www.facebook.com/groups/ATRP.RSS.2CR">https://www.facebook.com/groups/ATRP.RSS.2CR</a>	A Troop
<a href="https://www.facebook.com/groups/456480114694309/">https://www.facebook.com/groups/456480114694309/</a>	Charlie Troop
<a href="https://www.facebook.com/groups/2458428471154654/">https://www.facebook.com/groups/2458428471154654/</a>	Viper Troop

### Regimental Engineer Squadron

<a href="https://www.facebook.com/RES2CR">https://www.facebook.com/RES2CR</a>	Squadron Page
<a href="https://www.facebook.com/groups/2753376738207582/">https://www.facebook.com/groups/2753376738207582/</a>	Argonaut
<a href="https://www.facebook.com/groups/MaverickSFRG/">https://www.facebook.com/groups/MaverickSFRG/</a>	Maverick
<a href="https://www.facebook.com/groups/479548535509925">https://www.facebook.com/groups/479548535509925</a>	Beast
<a href="https://www.facebook.com/groups/404580583497712/">https://www.facebook.com/groups/404580583497712/</a>	Chaos
<a href="https://www.facebook.com/groups/827836027662898/">https://www.facebook.com/groups/827836027662898/</a>	Lakota



Use the QR Code to access the  
2CR Soldier and Family  
Readiness Facebook Group.





## Germany - Medicine

### Tricare Overseas

During Installation In-processing, you and any eligible, command sponsored dependents will sign up for Tricare Overseas. You and your family will be empaneled into one of two Military Treatment Facilities (MTF) in the area. As a rule, you and your dependents will be empaneled in the MTF that is closest to your work, regardless of where you live.

### Medical Information

#### WHO DO I CALL IF WE NEED A DOCTOR?

For emergency care, the nearest hospitals are in Amberg, Sulzbach-Rosenberg (no kinder clinic), and Weiden. For routine care you will see your Primary Care Manager. There are clinics located in Rose and Tower Barracks and you and your family will be assigned to one. You can also contact the Tele-health Line 24 hours a day for advice on treatment. There are vision services available on-post for beneficiaries as well.

### Patient Liaison

A patient liaison is a person assigned to you in case you end up in the hospital. They speak English and German and can help solve any language barrier or other issue you might have at the hospital or other off-post medical facility.

**For Inpatient Call:** 06371-9464-3874

**For Outpatient Call:** 06371-9464-3881 / 2576 / 3873

## Military Treatment Facilities – MTFs

#### U.S. Army Health Clinic Vilseck (w/pharmacy)

DSN 314-590-2300

CIV 06371-94642300

BLDG 260, Rose Barracks

Mon – Fri 0730 – 1630 (closed on Federal Holidays and 3<sup>rd</sup> Thursdays, from 1200-1630 for training)

#### U.S. Army Health Clinic Grafenwoehr (w/pharmacy)

DSN 314-590-3000

CIV 06371-94643000

BLDG 475

Mon – Fri 0730-1630 (closed on Federal Holidays and 1<sup>st</sup> and 3<sup>rd</sup> Thursdays, from 1200-1630 for training)

## Local Hospitals

#### Klinikum Amberg (Hospital with ER)

Mariahilfbergweg 7

92224 Amberg

Phone: 096621-3800 (15.8 miles from Vilseck)

#### St. Anna Krankenhaus (Hospital)

Krankenhaus-Str. 16

92237 Sulzbach Rosenberg

Phone: 09661-5200 (15.0 miles from Vilseck)

#### Klinikum Weiden (Hospital with ER) – closest to Graf

Soellnerstrasse 16

92637 Weiden in der Oberpfalz

Phone: 0961-3030 (21.5 miles from Vilseck)





## The Lay of the Land

### Retail Shopping

#### STORE EQUIVALENTS

**OBI** = Home Depot

**Tedi** = 5 Below or Dollar Tree

**Metro** = Costco, Sam's

**Rossmans, Mueller** = Walgreens, CVS, Rite Aid

**Real, Kaufland** = Walmart

**Media Markt** = Best Buy

**Edeka** = Kroger, Publix, Safeway, Albertsons, Hannaford

**Lidl, Aldi, Netto** = Lidl, Aldi, Save A Lot, WinCo

**\*Don't forget to bring your own re-usable shopping bags as retailers charge a fee for shopping bags**

#### IN GENERAL

**Tedi, Nanu-Nana, Thomas Phillips, and Hagebaumarkt** = craft items

**Apotheke** = pharmacy

**Hagebaumarkt, Poco, IKEA, Depot** = Home décor/furniture

#### CLOTHING STORES

All ages: **H&M, Kik, C&A, NKD, Jack Wolfskins**

Women's: **Orsay, Hunkemoller, Loft (Weiden)**

Shoes: **Deichmann, Sutor**

Shopping malls: **Bayreuth, Nuremberg, Weiden, Regensburg, and Prague** (all within 2 hours)

## Common German Greetings

**1.Hallo** (Hello)

**2.Tschüss** (Bye)

**3.Bitte** (Please)

**4.Danke** (Thanks)

**5.Entschuldigung** (Excuse me)

**6.Sorry** (Sorry)

**7.Formal: Können Sie mir helfen? Informal: Kannst du mir helfen?** (Can you help me?)

**8.Formal: Sprechen Sie English? Informal: In Sprichst du English?** (Do you speak English?)

**9.Einen Moment, bitte.** (One moment, please.)

**10.Das ist alles, danke.** (That's all, thank you.)







## The Lay of the Land

### Train Travels

For travel around Germany, and even outside Germany, consider touring by train. There are 5 train stops within 25 minutes of either Rose Barracks or Tower Barracks (**Vilseck, Amberg, Weiden, Pressath, and Freihung**). The Vilseck, Amberg, and Weiden train stations have friendly English-speaking ticket agents who are happy to help plan your train trip.

At most kiosk locations you can change the language to English. If you're not familiar with train systems, stop by the Vilseck train station office and speak with one of their friendly ticket agents. There are lots of deals that aren't listed on the site that they can help.

For more information, contact <https://www.bahn.com>

### Cheap Flights

For leisure travel, there is an on-post travel office called SATO. Their leisure office is in Tower Barracks building 244 (not to be confused with their official travel office on Rose Barracks) and they can assist with any leisure travel plans such as plane tickets, cruises, hotels, etc.

Visit CWTSato Vacations Europe at <https://europe.satovacations.com/contactUs/contactUs.aspx>

### Travel Passport

You are required to have and travel with a tourist passport if traveling outside of Germany. You are also advised to travel with the passport that contains your SOFA stamp (official or "no fee" passport) when traveling in Germany. Simply put, your tourist passport lets you out of Germany while your official passport with SOFA stamp lets you back into Germany.

The Garrison website also includes recommendations for what service members should carry (U.S. driver's license, leave Papers, ID, orders, etc.). Visit at <https://home.army.mil/bavaria/index.php/about/Directorates/dhr/passports>

The best way to make an appointment with the on-post passport office is to email the office directly. A lot of times they cannot answer the phones as they are busy processing passport applications. They will usually get back to you in a timely manner by email to answer questions and make appointments.

Their email is: [usarmy.bavaria.imcom-europe.mbx.dhr-mpd-passports@mail.mil](mailto:usarmy.bavaria.imcom-europe.mbx.dhr-mpd-passports@mail.mil)





## The Lay of the Land

### Traveling through Germany - Day Trips

**Parkstein** – just 28 minutes from Rose Barracks!

Parkstein is the home of an extinct volcano. Visit the Parkstein Volcano Museum and its castle ruins.

**Bayreuth** – just 47 minutes from Rose Barracks!

Home of one of the world's most stunning opera houses, the Ermitage Gardens, and the Richard Wagner Festival.

**Flossenbürg** – just 49 minutes from Rose Barracks!

Flossenbürg Concentration Camp Memorial is tucked into a neighborhood at the edge of Markt Flossenbürg, a few miles from the Czech border. If you wish to take an English tour, you may book ahead.

**Regensburg** – just 1 hour and 14 minutes from Rose Barracks!

Visit the stunning Walhalla Memorial (in the style of an ancient Greek temple) in Regensburg, one of UNESCO World Heritage Site's best preserved medieval cities in Europe. See the BMW factory, the world's oldest sausage kitchen, and St. Peter's Gothic Cathedral.

**Bamberg** – just 1 hour and 24 minutes from Rose Barracks!

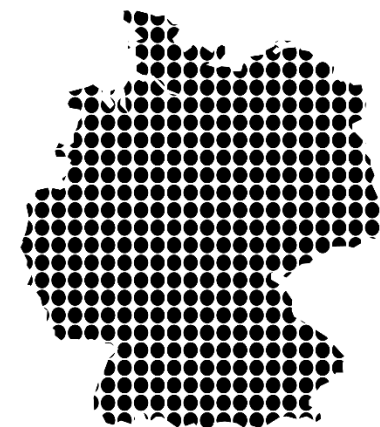
Bamberg is known for its smoked beer and delectable cuisine. Visit the Franconian Brewery Museum while you're there. Also, visit the Bamberg Cathedral where Pope Clement II rests (the only papal grave in Germany).

### Traveling Outside of Germany

If you plan on driving within **Austria, Bulgaria, Czech Republic, Hungary, Romania, Slovakia, Slovenia, or Switzerland** you will be required to purchase a valid vignette, which is a sticker that you must affix to your windshield signifying that you have paid the appropriate taxes and fees necessary to drive along the highways of any given country. Not procuring a vignette puts you at risk of having to pay additional fines and fees (starting around €60), which will be passed from the local governments to your Chain of Command.

Vignettes are very affordable and can be acquired at any border crossing into said required country.

The cost for a vignette ranges from €8-15 for a week and €34-95 for a year.



**GERMANY**



## Spouse Employment

### USAJOBS.GOV

You can search online for federal openings by visiting USAJOBS. The homepage will allow you to run a basic search. However, if you ultimately want to apply for positions, you will need to create an account in order to save your favorite jobs and searches, upload your resumes and documents, make your resume searchable, and apply for jobs in the federal government.

Visit <https://www.usajobs.gov/> to start!

### EUR Civ JOBS

The U.S. Army Europe and Africa civilian jobs self-advertising portal exists to simplify the experience of finding work in the European theater. The portal empowers you to advertise to the USAREUR-AF staff your eligibility and availability for open positions that may come available at some future point.

Simply provide contact and eligibility information, fill out a self-assessment based on your selected knowledge areas, and upload a resume. If suitable positions become available, USAREUR-AF hiring officials will contact you.

Visit <https://civjobs.ext.eur.army.mil/> for more information!

## Soldier and Spouse Education

The Education Center on both posts can help you find the best fit for college education options. There are four colleges on post that are always looking to help you continue your education:

University of Maryland Global Campus <https://europe.umgc.edu/>

Central Texas Europe <https://www.ctcd.edu/>

Embry Riddle Aeronautical University <https://worldwide.erau.edu/>

University of Oklahoma <https://pacs.ou.edu/military/military-student-services/ou-europe/>





## Better Opportunities for Single Soldiers - BOSS

The Better Opportunities for Single Servicemembers (BOSS) program represents the voice of the single servicemember. If you're a single servicemember, BOSS members advocate for you by advancing quality of life issues on the installation, and in the barracks, to senior leaders on post, and throughout the Army. **"Let Your Voice Be Heard"**

The BOSS program is based on **three program pillars**:

- Quality of Life
- Community Service
- Recreation and Leisure

As a member of BOSS, you have a voice in how you live, how you spend your leisure time and how you support the community around you. BOSS Soldiers:

- Coordinate and participate in community services projects
- Organize recreation and leisure activities
- Actively support the quality of life needs of single Soldiers

### BOSS Volunteers

Want to get involved in the community and don't know how? Join BOSS on one of our many volunteer outings or opportunities.

Examples of program participation:

- Income-generating activities
- Event support

Garrison BOSS programs are managed by a Senior Enlisted Advisor, MWR Advisor and BOSS President. BOSS serves the Single Soldier Community - active, guard and reserve - and single parents, geographical bachelors, and other branches of service and Foreign Service Members. BOSS membership and the program's available leadership and project management roles enhance your promotion packets.

Learn more about BOSS and how to become a member at [www.boss.armymwr.com](http://www.boss.armymwr.com).







## Additional Contacts

### Fire & Emergency Services

09662-83-112 (Vilseck) –OR—112  
09641-83-112 (Grafenwoehr) –OR—112

### Military Police

09662-83-114 (Vilseck) –OR—114  
09641-83-114 (Grafenwoehr) –OR—114

### Operations

09662-83-4310  
DSN 476-4310

### Police Interpreter

09662-83-4315  
DSN 476-4315

### German Police Liaison

09662-83-1380  
DSN 476-1380

### Suicide Prevention Hotline

09641-83-118  
DSN 118

### SHARP Hotline

09641-70-569-4567

### Domestic Violence Hotline

09662-83-3218  
DSN 476-3218

### USAHC – Vilseck Behavioral Health

06371-9464-2300, option 1 and then option 4  
DSN 590-2300

### Family Advocacy Program (FAP)

06371-9464-2433 / 3906

### Military and Family Life Counseling Program (MFLC)

0174-866-4024  
[Mflc.graf.2ndCR.styker@gmail.com](mailto:Mflc.graf.2ndCR.styker@gmail.com)

### Chaplain Family Life Counseling Services

Cavalry Chapel BLDG 218 DSN 569-7062

### Educational and Developmental Intervention Services (EDIS)

09662-83-3221  
DSN 476-3221

### School Based Behavioral Health

06371-9464-2552  
DSN 590-2552





## Before Anything Else, Preparation is the Key to Success

### 45-30 Day Countdown

- ☐ Complete DA Form 5434
- ☐ Schedule Household Goods pick-up
- ☐ Complete and turn in Change-of Address form at your local post office
- ☐ Gather medical and dental records to hand-carry
- ☐ Prepare car for shipment
- ☐ Notify school, gather sealed transcripts
- ☐ Arrange for pet shipment
- ☐ Gather immunization records
- ☐ Notify landlord to terminate lease under Section 5 of the Servicemembers Civil Relief Act (SCRA)

### 30 Day Countdown

- ☐ Start packing
- ☐ Arrange to disconnect utilities
- ☐ Dispose of worn out and unneeded items (German houses are much smaller than many American houses)
- ☐ Finish packing personal items





## Before Anything Else, Preparation is the Key to Success

### Before You Leave the U.S., You May Want to:

- ☐ Renew your stateside driver's license before you leave. It is a requirement for your USAREUR license. If it expires before your DEROS date, you will need to contact your state to make renewal arrangements.
- ☐ Bring several copies of your Orders and any amendments. You will need to turn them into various officials, including but not limited to MPD once you arrive at the Graf Reception Center (BLDG 244)
- ☐ Know your Social Security Numbers (including your children's). Arrange to bring your Social Security Cards.
- ☐ Bring your birth certificates (including your children's).
- ☐ Apply for and receive your SIP/SOFA passports (for all members of your family except Soldiers).
- ☐ Bring your official marriage license.
- ☐ Bring official divorce decrees (for each divorce, for Soldier and spouse).
- ☐ Bring official citizenship/proof of naturalization.
- ☐ Bring official custody/adoption papers.
- ☐ Bring any Powers of Attorney.
- ☐ Bring Insurance policy papers.
- ☐ Bring State and federal tax records.
- ☐ Bring car registrations and titles.
- ☐ Bring credit card statements.
- ☐ Bring storage records/documents.
- ☐ Bring voter registration information.
- ☐ Bring SEALED school transcripts.
- ☐ Hand-carry your medical, dental, and immunization records.
- ☐ Record the model and serial number for electronics you are bringing.





## Before Anything Else, Preparation is the Key to Success

### Before You Leave the U.S., Go Shopping!!

- ❑ Clothing! German clothing and shoes are expensive for high-quality. There aren't many plus-size clothing options locally. Regardless of size, German clothing runs smaller. Online orders to the U.S. takes several weeks and German sales usually occur only twice a year.
- ❑ Shoes! Supply is not dependable and is limited in popular fashions and sizes. Germans' style preferences are different as well. You may not find what you usually like in the U.S.
- ❑ Perfumes and other scents that contain alcohol! The PX has some body fragrances and even popular body and home brands such-as Bath & Body Works. However, the stock is limited, you cannot make special orders, home scents are usually off-season, and you cannot ship these from the States via APO. The larger malls, which may carry name-brand, familiar scent options, are also hours away. Perfumes cannot ship in household goods – any perfumes would need to be packet in checked luggage.
- ❑ Children's books! There are limited selections in the PX and books you find on the economy will be in German. Again, it takes several weeks to receive a shipment from the U.S.
- ❑ Large household items (e.g., area rugs, chairs, mattresses, beds, décor items)! Large items cannot be shipped to Europe by online order from the U.S. If you want one that's in the U.S., buy it now and ship with your household goods. There are several places in Germany you can buy these items from, however, you will need to arrange for the deliveries to get on post if that's where you will live. Also, mattresses on the economy are sized differently than U.S. mattresses, therefore, if you buy one and want to bring it back with you, you may have a difficult time finding appropriate bedding.
- ❑ Eyeglasses and contacts! There is an eyecare shop on-post Tower Barracks, however, due to COVID-19 and the number of people utilizing the same store, there may be a long wait time for appointments. They primarily sell contact brands that are unfamiliar to most of the U.S. economy as well. The PX sells most US brand eye care products.
- ❑ Craft supplies! There is a limited supply available. Stores on the economy don't always have the same items available from one shopping trip to the next.





# Before Anything Else, Preparation is the Key to Success

## Pro Tips:

Download the **Army PCS Move** App!

The **Regimental Commander (RCO)** hosts a mandatory **2CR Newcomer's Brief** every 2<sup>nd</sup> or 3<sup>rd</sup> Wednesday of the month at the Rose Barracks Theatre. Contact your Squadron Sponsorship Coordinator, S1, or the Regimental TASP Coordinator for more information.

You and your spouse will both receive Rations Cards through S1. Coffee, cigarettes, and liquor that is not beer or wine is rationed on post.

Laptops and desktop computers are dual-voltage. You'll simply need an adapter to plug into a German outlet.

If you plan on renting a car when you get here, you're eligible to get an ESSO card for your rental car. Stop by Customs to receive an AE Form 550-175L.

**2CR** = 2d Cavalry Regiment

**Troop** = Company

**Squadron** = Battalion

**Regiment** = Brigade

**Rose Barracks** – the closest post to the German city of Vilseck

**Tower Barracks** = the closest post to the German city of Grafenwoehr

**USAG Bavaria** = United States Army Garrison, Bavaria

**USAREUR-AF** = United States Army Europe Africa

If you live on the economy, you will not receive the yellow recycle bins (for plastic). Instead, you may go to self help on post to get free yellow plastic bags for your plastics.

**Vilseck Commissary** on Rose Barracks is closed on Wednesdays. **Graf Commissary** is, however, open 7 days a week, except for some Federal Holidays. If you live in Netzaberg then you are geographically located just outside of Tower Barracks.

If you own popular video game consoles such as Xbox 360 S Series, Xbox One, PS4, and other earlier model consoles, including Wii and Wii U, be aware that they are not dual voltage and using a transformer and/or changing the plug adapter for use in a 220v outlet is at your own risk!

German houses are wired differently. Do not hang pictures or nails above power outlets/wall sockets, as there is wiring directly above them.



You will sign-in from leave once you have arrived in Germany unless you have requested in-country leave (which is rarely granted). If you wish to make the most of your PCS leave, you should schedule your flight as close as possible to your report date.